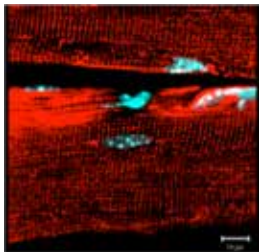


Center for Basic Technology Research

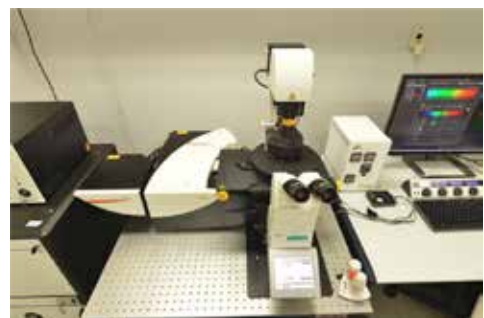
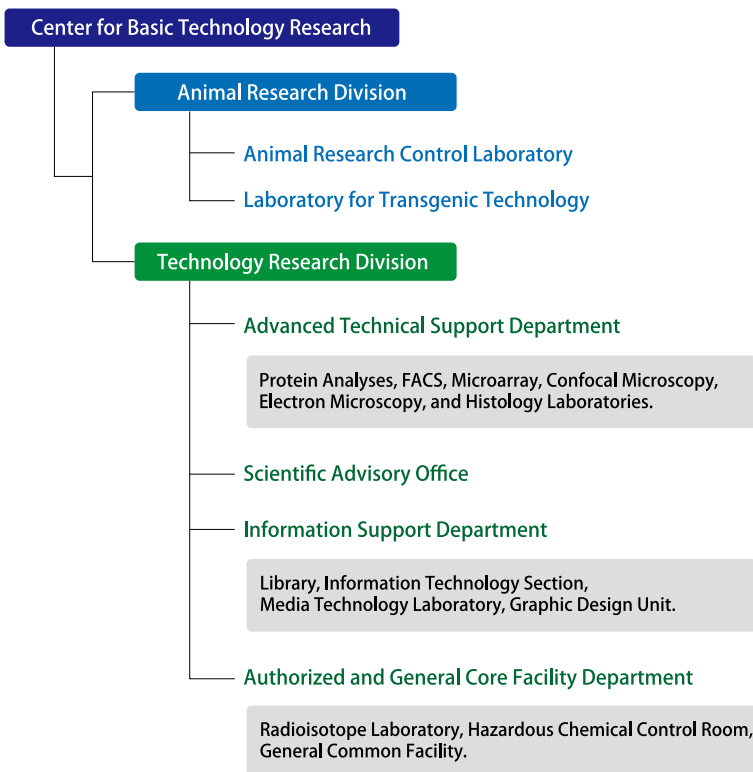


General Manager
Minoru Saitoe



The Basic Technology Research Center provides multiple resources to assist the researchers of the institute conduct researches with the maximum efficiency. The services provided include state-of-the-art technologies required for biomedical and life science researches at their highest level, and maintenance of various facilities which are routinely used by the researchers. Details of the services provided and specific activities of related facilities are given below.

1. The Animal Research Division maintains the animal facility that is used by all the researchers who use animals for their research. It assists researchers generate knock-out or transgenic animals as well as maintain sperms and eggs of various lines of mutant animals. It also provides maximal care for the welfare of the animals used in the research.
2. The Advanced Technical Support Department consists of Protein Analyses, FACS, Microarray, Confocal Microscopy, Electron Microscopy, and Histology Laboratories etc. and offers state-of-the-art technology to the researchers.
3. The Information Support Department consists of Library, Information Technology Section, Media Technology Laboratory and Public Relation Office. It assists researchers search for references, provides supports for daily use of computer systems, and deals with the media.
4. The Authorized and General Core Facility Department consists of Radioisotope Laboratory, Hazardous Chemical Control Room and General Common Facility, and provides the researchers with various special and common facility as well as safety regulations for accident-free daily operation of the institute.



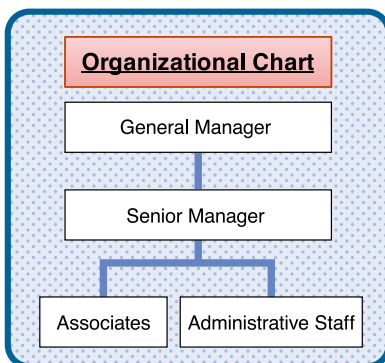
Technology Licencing Office (TLO)



General Manager
Futoshi Shibasaki, MD, PhD

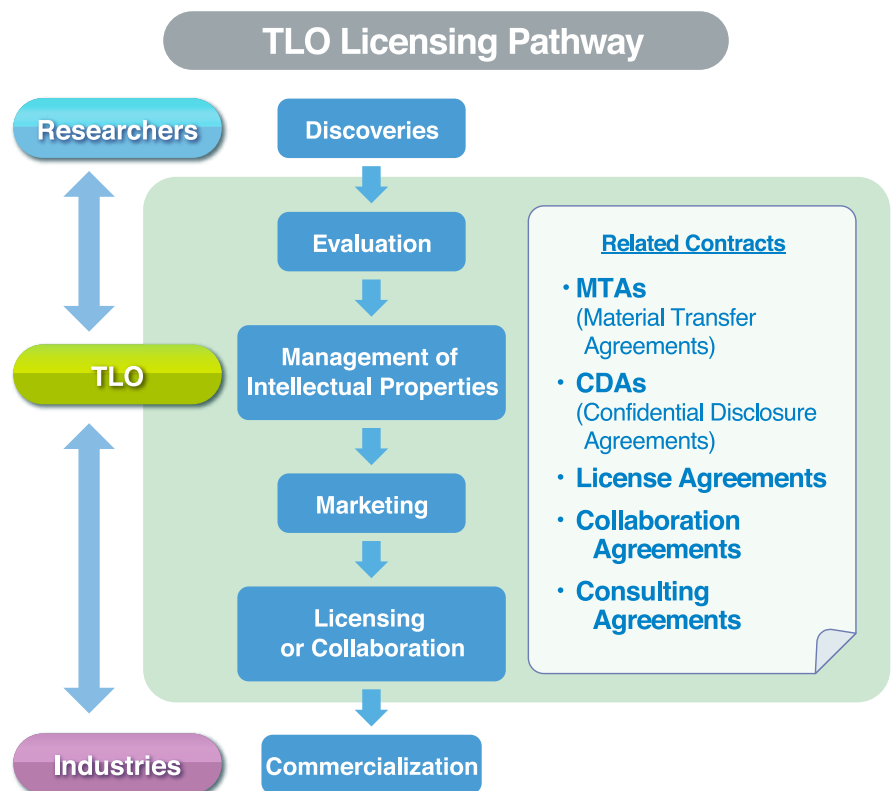


Senior Manager
Kazumasa Aoki, PhD



Who we are

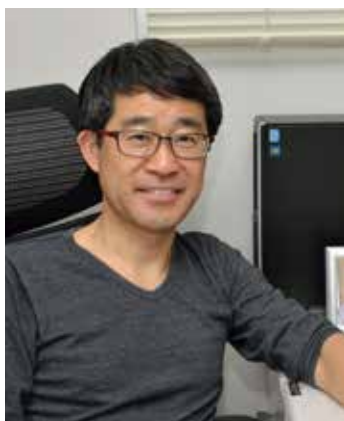
- The Technology Licensing Office (TLO) facilitates the conversion of scientific discoveries to innovative technologies with the ultimate goal of improving public health and welfare.
- We evaluate basic research findings (seeds) as intellectual property assets, and license promising candidates to industries for development as medicines, diagnostics, medical devices, foods, cosmetics and research tools.



What we do

- We manage intellectual properties from our institute including patents, copyrights and materials in order to develop them for commercialization.
- To promote technology transfer, we introduce seeds and intellectual properties with potential commercial value to pharmaceutical, medical device, and startup companies.
- We attend business meetings such as the BIO international convention in the US, BIO-EUROPE, and BioJapan, to develop Public Private Partnership opportunities between our institute and industries. We support collaborative research projects with industries by arranging Joint Research Agreements, Material Transfer Agreements (MTA), and other contracts to protect and develop a wide range of research discoveries.

Center for Medical Research Cooperation



Head of Office

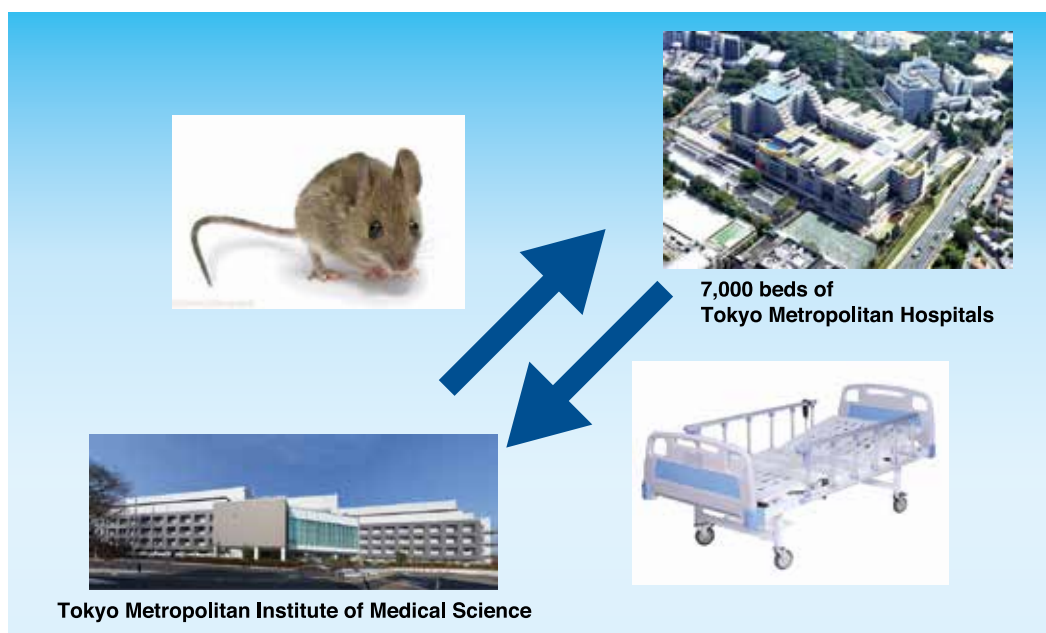
Masanari Itokawa MD, PhD

Making the Dream of Young Scientists Come True

– from bench to bed and back again –

We provide---

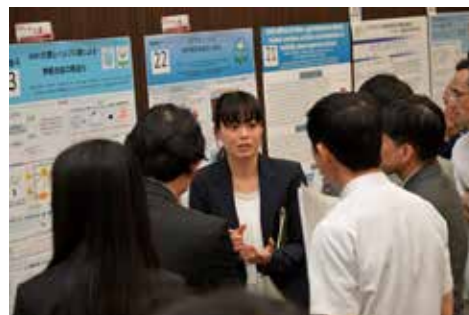
- Consultation on statistical analyses
- Ethical issues related to human specimens
- A bridge between basic scientists and medical doctors



Conference with researchers and medical doctors

We provide tools for developing medical technology from simple findings at the bench; the process similar to making a brilliantly sparkling jewelry by cutting a piece of crude stone. We provide consultation on statistical analyses of raw data. We manage ethical issues related to human specimens. We facilitate the communication between the basic scientists and medical doctors.

Most of discovery of scientific research is unexpectedly made by scientists who still have very “flexible” scientific mind, the privilege of young people.



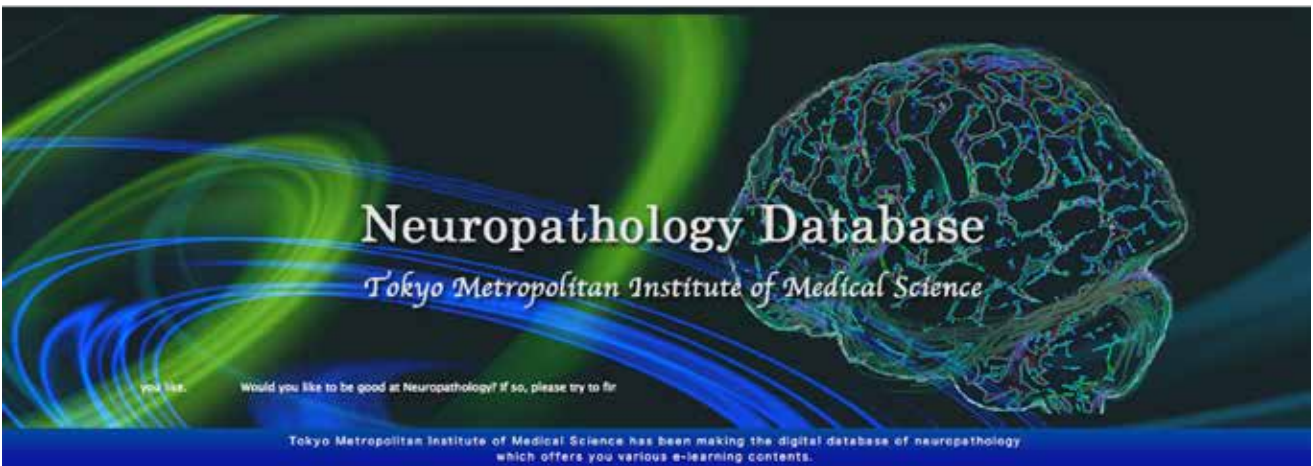
A young scientist discussing with medical doctors in a conference



Neuropathology Laboratory

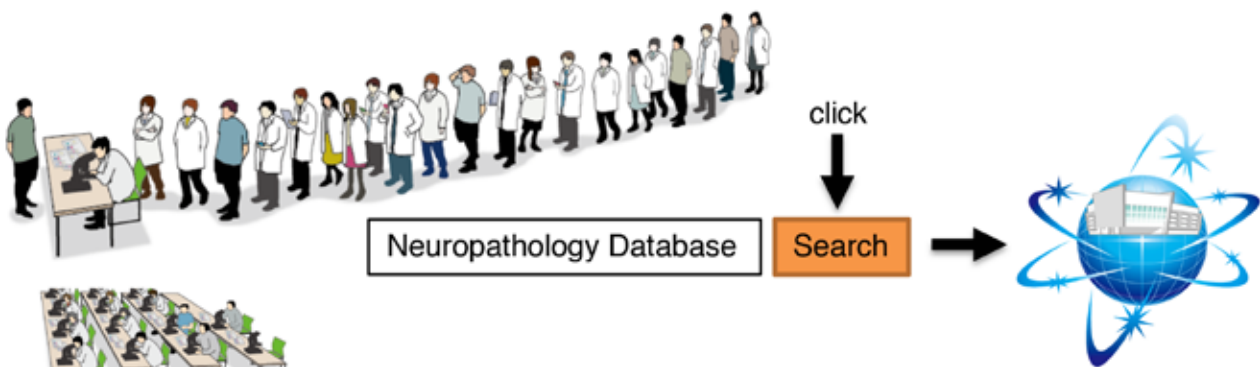
Laboratory Head
Nobutaka Arai

***Translational Research using human materials
and
Management of Database for
Essential Brain Anatomy & Neuropathology***



Laboratory of Neuropathology has more than 5,000 sets of human autopsied brain slides with a wide variety of human neurological diseases. In recent years, we have been scanning these slides with virtual slide instruments. Using those digital data and their derivatives, we construct digital neuropathology.

The microscope will be replaced by digital pathology !



Members:
Erika Seki, Rika Kojima, Kazunari Sekiyama
Nobuko Ueki, Tomoko Yagi
Tsunemi Yamanishi, Keiko Akamatsu
Hiromi Eguchi, Yoshitomo Umitsu

Neuropathology

TMIMS Programs

Seminars/ lectures and related activities

Scientific seminars:

We have scientific seminars by renowned scientists from Japan and overseas almost every week in various subjects.

International Symposium:

We have three to four annual international symposium by inviting top-flight scientists from all over the world in various subjects.

Science forum with industry:

We have annual forum hosted by our TLO office where scientists at our institute introduce our discovery and discuss potential applications with scientists from industry.

In-house and delivery lectures to high school students:

We give lectures to visiting high-school students or visit high schools to present lectures as a part of our effort to educate youngsters and introduce them into this field.

Joint graduate school programme:

Many scientists at our institute have joint appointment as a lecture or as a visiting professor at various universities. Many undergraduate and graduate students are conducting their master/ Ph.D. researches at our institute under the guidance of our scientists.

Open laboratory to graduate students:

Once a year we invite students to our institute, conduct presentation and give them opportunities to experience the laboratory.

Summer training courses:

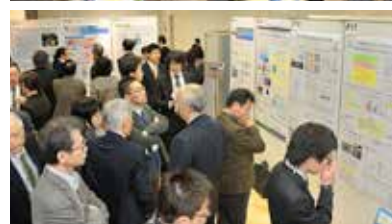
We have annual summer training courses to provide in-house training on various experimental techniques.

Lectures to public:

We conduct public lectures(8 times a year) to let public know the scientific progress and our various activities made at our institute.

Science Café:

We have Café-style meetings (3-4 times a year) where we give public the opportunities to learn, discuss and experience science and let them know the joy of science in a very casual setting.



Supports for young scientists

Research Associate Fellowship:

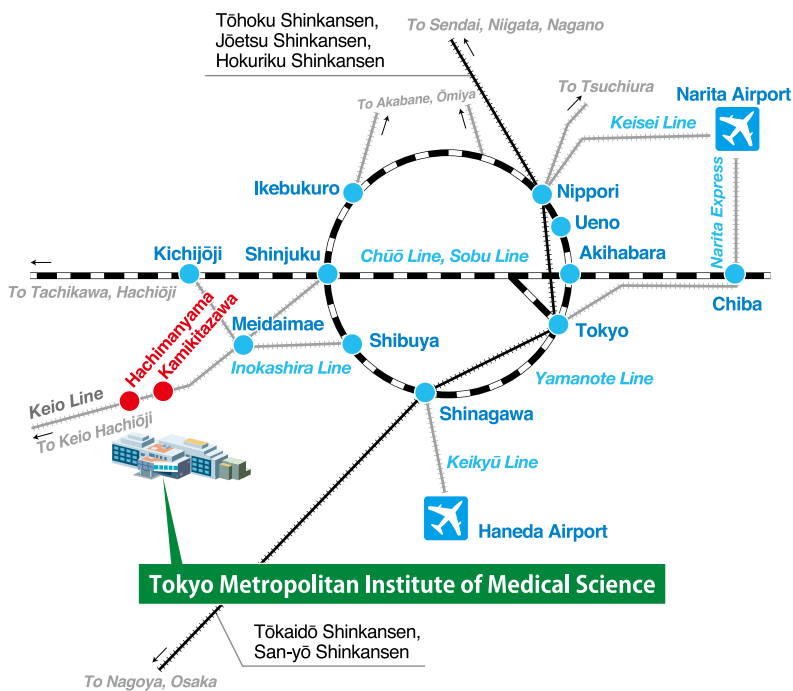
We provide graduate students who conduct their master/ Ph.D. thesis research at our institute with research associate fellowship to give them financial support.

Travel support for young scientists attending an international meeting:

We provide students and young scientists of our institute with travel fellowship with which they can attend international meetings where they will present their latest findings.

Access Map

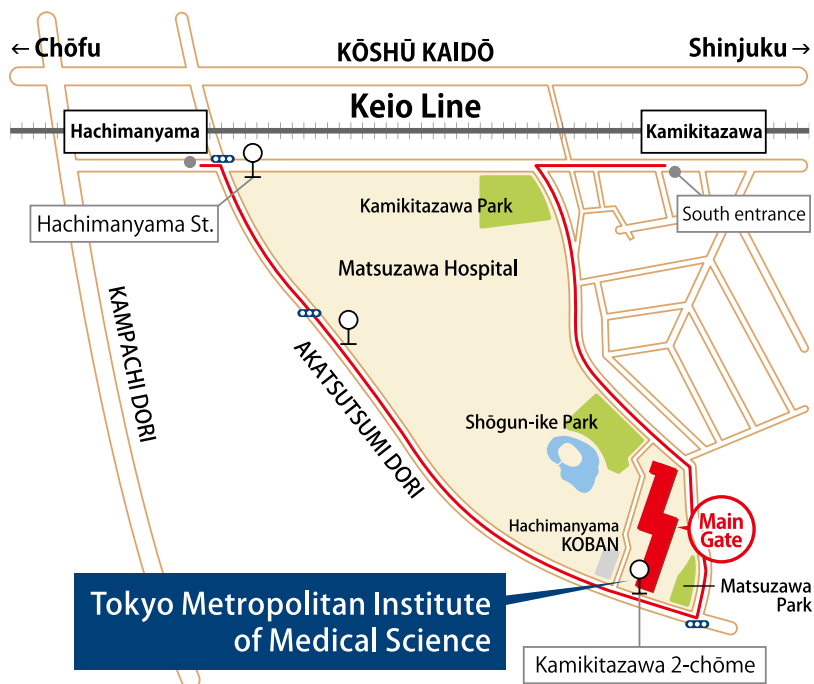
Tokyo Metropolitan Institute of Medical Science	
Address	2-1-6 Kamikitazawa, Setagaya-ku, Tokyo, 156-8506, Japan
Tel	+81-3-5316-3100
Fax	+81-3-5316-3150



AIRPORT to INSTITUTE

From Narita Airport to Kamikitazawa Station / Hachimanyama Station	
Narita Airport - Shinjuku Station	JR Narita Express
Shinjuku Station - Kamikitazawa Station / Hachimanyama Station	Keio Line

From Haneda Airport to Kamikitazawa Station / Hachimanyama Station	
Haneda Airport - Shinagawa Station	Keikyū Line
Shinagawa Station - Shinjuku Station	JR Yamanote Line
Shinjuku Station - Kamikitazawa Station / Hachimanyama Station	Keio Line



- From Kamikitazawa Station to Institute
 Walk (approx. 10 min From South entrance of Station).

- From Hachimanyama Station to Institute

Hachimanyama Station - Kamikitazawa 2-chōme	Keio bus / Odakyū bus
Kamikitazawa 2-chōme - Institute	Walk



<http://www.igakuken.or.jp/english/>

As of October 1, 2018